

SOLO PERFORMANCE

STAINLESS STEEL EXHAUST PRODUCTS

INSTALLATION INSTRUCTIONS FOR...F150 "MACH-XV ECO-DUAL" EXHAUST KIT

Warning: When Working on under or around any vehicle exercise caution. Please allow the vehicle's exhaust system to cool before removal, as exhaust system temperatures may cause severe burns. If working without a lift, always consult vehicle manual for correct lifting specifications. Always wear safety glasses and ensure safe work area. Serious injury or death could occur if safety measures are not followed. Professional installation recommended.

NOTE: ~ VERY IMPORTANT~

Please follow the exhaust install instructions carefully. Extreme caution must be taken to ensure proper alignment of the exhaust tips. Do not tighten any of the band clamps or connections until everything is in place and the tips are aligned perfectly.

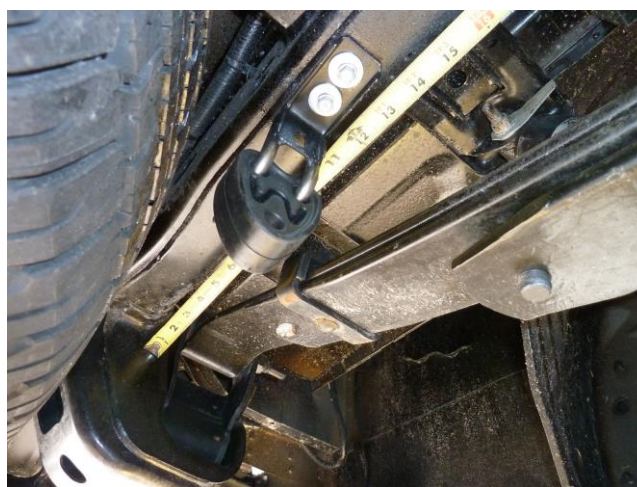
REMOVING STOCK EXHAUST SYSTEM:

- 1) Remove two 13mm bolts at the two hole flange that connects the converter assembly to the mid pipe.
- 2) Loosen 15mm nut on the band clamp at the flex pipe.
- 3) There is one hanger between the converter and the muffler. Remove the hanger from the truck body using a 10mm socket. This allows the system to drop.
- 4) There is a 'keyway' connection where the mid-pipe meets the muffler assembly. Drop the exhaust from the flange at the converter and turn the mid-pipe counter clockwise and once the keyway has moved to the "release" position, pull the exhaust pipe out. Heat or lubricant might be necessary to twist the pipe.
- 5) Slide muffler and tailpipe assembly rearward to remove from hangers.
Note: Squirtling soapy water into the rubber hanger (Soapy water does not hurt the rubber like WD40 could) will make removal easier. A large set of channel lock pliers to squeeze the hanger out of the rubber may help.
- 6) Use care not to damage brake and ABS lines by the rear axle area.
- 7) If you are not using a hoist you may have to cut the tailpipe by the rear of the muffler to maneuver the pieces out.
- 8) Reinstall the mid pipe hanger using your 10mm socket.
- 9) Removal is now complete.

INSTALLING YOUR NEW SOLO DUAL ECOBOOST EXHAUST KIT: (MACH-X ECO-DUAL)

***NOTE: If you snug everything first instead of fully tightening, it will allow for movement and adjustments once the new system is on.
Snug, align, snug some more and then do your final tighten.***

- 1) Relocate rear driver's side differential vent tube (closest to the spare tire) to the outside of the brake hoses. Pull the hose off and re c-clip it into the spare clip that is toward the outside of the truck.
- 2) Slide Solo's mid pipe into the two hanger and snug flange with the 3" bolts and nuts that are supplied.
- 3) Slide on muffler assembly.
- 4) Slide on passenger side tailpipe making sure it fits nicely into the hanger brackets.
- 5) There is an extra Solo provided hanger for the driver's side tailpipe. Two self-drilling screws are provided to hold the hanger to the frame. Measure 12 1/2" from the leaf spring frame bracket and that's your first hole. You can drill a 1/8" pilot hole if you want. The self-drilling bolts have a 3/8" head and you can push up and drill these bolts directly into the frame without a pilot hole just drill slowly. If you go fast you may burn them out. Install the second self-drilling screw into the second hole. Insert the driver's side tailpipe and make sure that the tips are aligned exactly properly from the driver's side to the passenger side.



- 6) Install band clamps (bolts facing upwards.) Manipulate all parts into proper position with proper clearances. Lightly snug the band clamps so that you still have room to maneuver.

SOLO Clamps: Hold the top nut with a 9/16" wrench and lightly snug the bottom bolt head with a 9/16 socket.

**THIS FLAT BAND CLAMP WILL FORM AROUND EACH LAYER OF PIPE
TIGHTEN THE BOLTS EVENLY.**

- 7) Check the parts position concentrating on "tip position" and clearances and do a light tighten on all the clamps and flange. Check again and do a harder tighten. Check again and do a final tighten.
- 8) Make sure drivers side frame hanger is tight and also make sure that the mid pipe hanger that was taken off is tight.
- 9) Check for rattles. Check that each bolt is tight.

10) Drive away and **Enjoy Going Solo!**

Any questions or concerns please do not hesitate to call

Jeff (905)703-1557

Solo (Kenmore NY) at (716) 875-SOLO

Solo (Mississauga Ont.) at (905) 897-6833!
